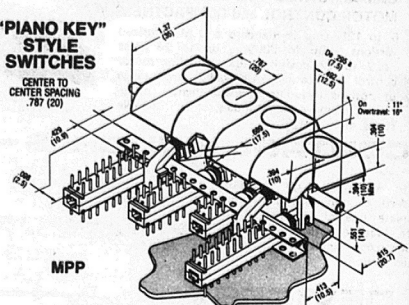


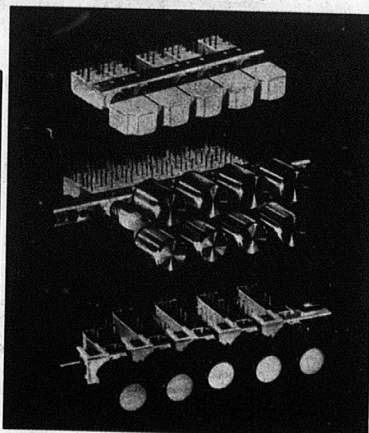
"The push toward miniaturization"

MP Series push button switches

by **ITT** Schadow



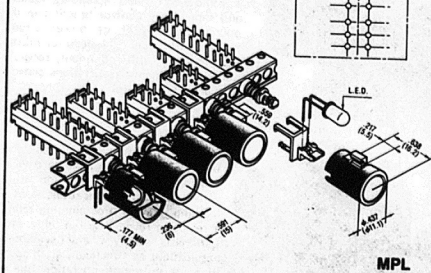
The integral button and pivot mechanism are supplied as one complete unit i.e. no subkeys. Also available in 15mm spacing.
Colors: Black, white, red, grey, bright chrome and matte chrome.
Available only in button style shown.
NOTE: It is recommended that both ends of the piano key rod be used as mounting support.



A wide variety of classic button choices is available in black, white, red, grey, bright chrome and matte chrome.
Samples, specs and price quotations on request.

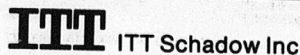
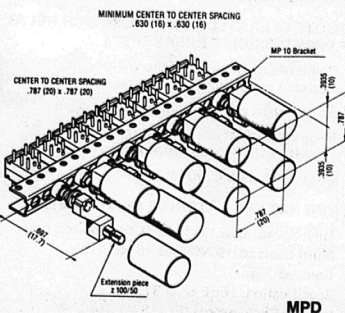
SWITCHES WITH ILLUMINATED BUTTONS

The MP Series is also offered with LED illumination. LEDs may be wave soldered onto the P.C. board with the switch, or placed into its plastic holder and snapped into position afterwards. Buttons that encompass the LED are attached accordingly.



DOUBLE BANK SWITCHES

Double Bank Switches permit 2 row interlock function operating from a single switch bank (also available on 10mm frame resulting in 20mm spacing). To permit wave soldering, the extension pieces and buttons are always supplied separately.



80816 Wallace Road, Eden Prairie, MN 55344 • 612/944-1820 • TWX 910-576-2469 • TELEX: 29-0556
Manufacturing facilities in Minneapolis, Minnesota; Einbeck, W. Germany; W. Berlin and Dole, France
In Canada: ITT Components, 4001 Chesswood Drive, Downsview, Ontario M3J2P8 • 416/630-7971 • TFI FX-06-2272

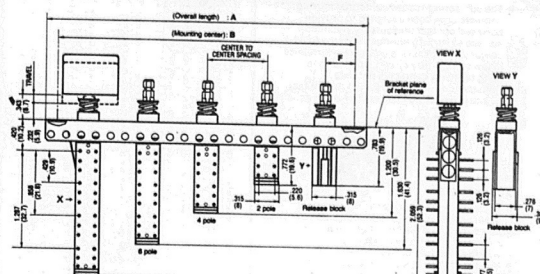
"The push toward miniaturization"

MP Series push button switches

The miniature MP Series push button switch is the smallest economical multi-position push button switch available, and yet it provides all the switching capabilities of larger versions. Poles numbering from 1 to 8 per module may be operated in momentary, push-push, or interlock modes. Each pole is tested electrically and mechanically at the completion of its automated assembly. Designed for wave soldering. Manufacturers of televisions, electronic test equipment, computers and office equipment utilize this compact design. Plunger spacing can be as little as 8, 10 and 15 millimeters or multiples thereof.

The MP Series may also be provided as an illuminated unit. Snap-on brackets are available which securely position an L.E.D. that transmits light through a frosted button lens.

SWITCH DIMENSIONS



NOTE: All dimensions are shown in inches (with mm in parenthesis)

CENTER TO CENTER SPACING .315 (8) on bracket module 8, plunger center to mounting hole center F = .315 (8)

Number of blocks																			
	2	3	4	5	6	7	8	9	10	11	12	13	14	16	17	18	19	20	
(Overall length)	1,528 (38.8)	1,843 (46.8)	2,157 (54.8)	2,472 (62.8)	2,787 (70.8)	3,102 (78.8)	3,417 (86.8)	3,732 (94.8)	4,047 (102.8)	4,362 (110.8)	4,677 (118.8)	4,992 (126.8)	5,307 (134.8)	5,622 (142.8)	5,937 (150.8)	6,252 (158.8)	6,567 (166.8)	6,882 (174.8)	7,197 (182.8)
B (Mounting Center)	945 (24)	1,260 (32)	1,575 (40)	1,890 (48)	2,205 (56)	2,520 (64)	2,835 (72)	3,150 (80)	3,465 (88)	3,780 (96)	4,094 (104)	4,409 (112)	4,724 (120)	5,039 (128)	5,354 (136)	5,669 (144)	5,984 (152)	6,299 (160)	6,614 (168)

CENTER TO CENTER SPACING. .394 (10) on bracket module 5, plunger center to mounting hole center F = .394 (10)

Number of blocks	2	3	4	5	6	7	8	9	10	11	12	13	14	15	16	17	18	19	20
A (Overall length)	1.528 (58.8)	1.921 (75.6)	2.315 (91.1)	2.709 (106.7)	3.102 (122.1)	3.496 (137.5)	3.890 (152.8)	4.283 (168.2)	4.677 (183.5)	5.071 (198.8)	5.465 (214.1)	5.858 (229.4)	6.252 (244.7)	6.646 (260.0)	7.039 (275.3)	7.433 (290.6)	7.827 (305.9)	8.220 (321.2)	8.614 (336.5)
B (Mounting Center)	1.181 (30)	1.475 (37)	1.969 (50)	2.362 (60)	2.756 (70)	3.150 (80)	3.543 (90)	3.937 (100)	4.331 (110)	4.724 (120)	5.118 (130)	5.512 (140)	5.906 (150)	6.299 (160)	6.693 (170)	7.087 (180)	7.480 (190)	7.874 (200)	8.268 (210)

CENTER TO CENTER SPACING .492 (12.5) on bracket pitch 12.5, plunger center to mounting hole center $F = .492$ (12.5)

Number of blocks	2	3	4	5	6	7	8	9	10	11	12	13	14	15	16	17	18	19	20
A (Over length)	1.921 (46.8)	2.413 (61.3)	2.906 (73.8)	3.398 (86.3)	3.890 (98.8)	4.382 (111.3)	4.874 (123.8)	5.366 (136.3)	5.858 (148.8)	6.350 (161.3)	6.843 (173.8)	7.335 (186.3)	7.827 (198.8)	8.319 (211.3)	8.811 (223.8)	9.303 (236.3)	9.795 (248.8)	10.287 (261.3)	10.779 (273.8)
B (Mounting Center)	1.476 (37.5)	1.969 (50.1)	2.461 (62.6)	2.953 (75.1)	3.445 (87.5)	3.927 (100)	4.429 (112.5)	4.921 (125)	5.406 (137.5)	5.896 (150)	6.382 (162.5)	6.890 (175)	7.382 (187.5)	7.884 (200)	8.365 (212.5)	8.856 (225)	9.337 (237.5)	9.843 (250)	10.333 (262.5)

CENTER TO CENTER SPACING .591 (15) on bracket module 5, plunger center to mounting hole center F = .394 (10)

2.5" (63.5mm) 10/11 on bracket module 5, plunger center to mounting hole center F = .394 (10)																				
Number of blocks	2	3	4	5	6	7	8	9	10	11	12	13	14	15	16	17	18	19	20	
A (Overall length)	1.724 (4.43)	2.315 (5.86)	2.906 (7.36)	3.496 (8.88)	4.087 (10.40)	4.677 (11.92)	5.268 (13.44)	5.858 (14.96)	6.448 (16.48)	7.038 (18.00)	7.629 (19.52)	8.220 (21.04)	8.811 (22.56)	9.402 (24.08)	9.992 (25.60)	10.583 (27.12)	10.780 (27.64)	11.764 (30.04)	12.356 (31.56)	12.948 (33.08)
B (Mounting center)	1.378 (35)	1.969 (50)	2.559 (65)	3.150 (80)	3.740 (95)	4.331 (110)	4.921 (125)	5.512 (140)	6.102 (155)	6.693 (170)	7.283 (185)	7.874 (200)	8.465 (215)	9.055 (230)	9.645 (245)	10.326 (265)	10.927 (280)	11.417 (295)	12.008 (310)	12.598 (325)

CENTER TO CENTER SPACING .787 (20) on bracket module 5, plunger center to mounting hole center F = .394 (10)

Number of blocks	2	3	4	5	6	7	8	9	10	11	12	13	14	15	16	17	18	19	20
A (Overall Length)	1.921 (49.8)	2.709 (68.8)	3.496 (88.8)	4.283 (108.8)	4.067 (104.8)	5.858 (148.8)	6.647 (168.8)	7.433 (188.8)	8.220 (208.8)	9.008 (228.8)	9.795 (248.8)	10.583 (268.8)	11.370 (288.8)	12.157 (308.8)	12.945 (328.8)	13.732 (348.8)	14.520 (368.8)	15.307 (388.8)	16.095 (408.8)
B Mounting Center	1.575 (40)	2.362 (60)	3.150 (80)	3.937 (100)	4.724 (120)	5.512 (140)	6.299 (160)	7.087 (180)	7.874 (200)	8.661 (220)	9.449 (240)	10.236 (260)	11.024 (280)	11.811 (300)	12.598 (320)	13.386 (340)	14.173 (360)	14.961 (380)	15.748 (400)

